



# Indus Vista Apartments (FGEHA), FMC, adjacent to B-17 Islamabad

Federal Government Employees  
Housing Authority

# LOCATION MAP



## Distances

- On the bank of GT Road (N5)
- New Islamabad Airport 20 KM
- Shahr-e-Kashmir 10 Km

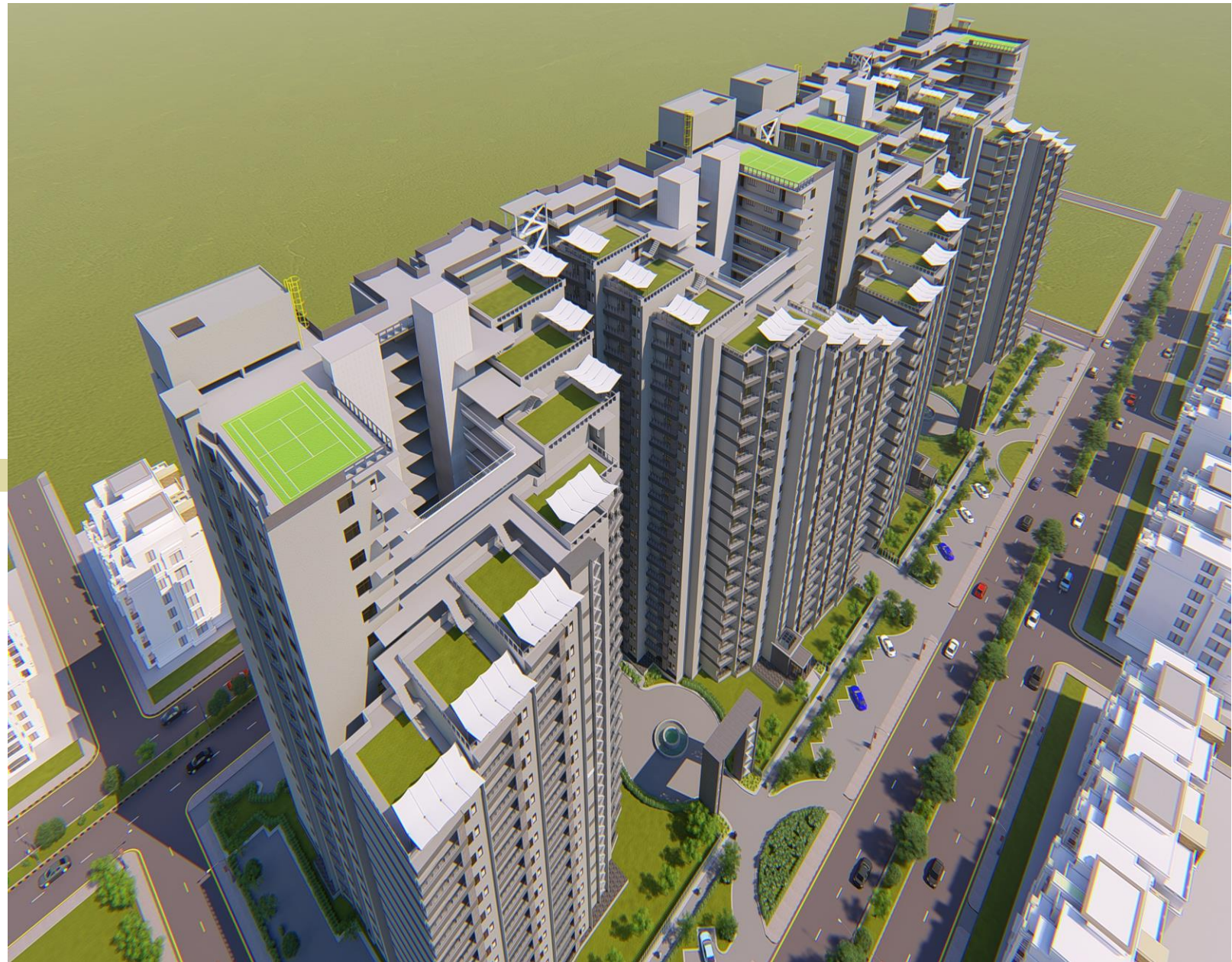


# 3D TOP VIEW





# 3D LEFT SIDE TOP VIEW





# 3D RIGHT SIDE TOP VIEW





# 3D FRONT VIEW





# 3D LEFT SIDE VIEW





# 3D GROUND VIEW





# 3D BALCONY VIEW





# Layout Plan

## 1920 SFT Apartment



### 5 plans for 1920 SFT Apartments

- Bed Rooms 3 Nos
- Drawing Room 1 No
- Living Room 1 No
- Kitchen 1 No
- Bath Room 3 Nos
- Store 1 No

1920 SFT



# Layout Plan

## 1410 SFT Apartment



1410 SFT

### 1410 Apartments

- Bed Rooms 2 Nos
- Drawing Room 1 No
- Living Room 1 No
- Kitchen 1 No
- Bath Room 2 Nos



# Tentative Prices of Apartments

*These are tentative prices of apartments including circulation area and it will be charged as per actual cost incurred.*

BPS	Size of Apartment	No. of Apartments	Cost per SFT	Tentative Cost of Apartment
18-22	1920 SFT	375	Rs.5,500	Rs.10,560,000
10-17	1410 SFT	396		Rs.7,755,000

*Parking shall be charged separately.*





# Indus Vista Apartments a Project of FGEHA

FMC, adjacent to B-17, Islamabad





**THANK  
YOU!**

*Phone:*

**+92 51 910-6041 & 46**

*Email:*

**info.jv@fgeha.gov.pk**

*Website:*

**www.fgeha.gov.pk**